



# SCHUBERT AUCTIONS

“AUCTION” IS “ACTION” WITH -U- IN IT!  
**SATURDAY, JUNE 20<sup>TH</sup> 2026 ♦ 9AM**

**LOCATION: 14343 HWY 25 PIERZ, MN 56364 (INTERSECTION OF HWY 25 AND HWY 27) IN THE HEART OF PIERZ, MN**

**Auctioneer's Note:** Schubert Auction Service would like to thank everyone for their continued support of the Pierz Farm Consignment Auctions. This looks to be another great auction with outstanding quality. The auction has many great items all consigned by local farmers in Pierz and the surrounding areas. There is guaranteed to be **at least double this many consignments by sale day** so keep up with [www.schubertauctions.com](http://www.schubertauctions.com) for updated lists. Online items will begin selling at 9:30am. If questions, please call **Luke Schubert 218-251-7610**.

**More Consignments Welcome - All items must be to the sale location by Wednesday, June 17<sup>th</sup>. ♦ View and Inspect Items on June 18<sup>th</sup> & 19<sup>th</sup> from 9AM – 5PM for assistance.**

## TRACTORS & LOADERS

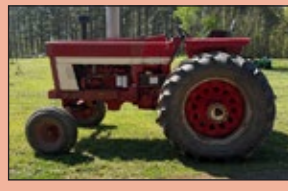
- 2007 Kubota M125X MFWD Tractor with Only 815 Original Hours, 5.8L Diesel Engine, 16 Speed Powershift Transmission, Left Hand Shuttle, 4



- Remote Hydraulics, 3pt with Stabilizer. Serial # 50560 (Extremely Nice Low Use Tractor)



- 1981 John Deere 4440 2WD Tractor with Quad Range Transmission, 540/1000 PTO, 2 SCV Hydraulic Remotes Converted to ISO, Like New Rear 18.4-38 Goodyear Tires, Unknown Hrs.



- IH 1066 2WD Tractor with 540/100 PTO, 3pt, 2 Remote Hydraulics, 3403 Hrs (Good Condition, 2 Owner Tractor)



- IH 684 2WD Diesel Tractor

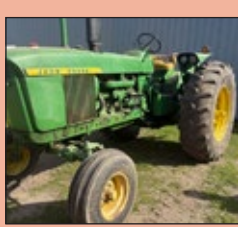
- Allis Chalmers CA with Wide Front and Woods L306 Belly Mower

- Great Bend 760 Loader

- Buhler Allied 595 Loader with Joystick Controls and Material Bucket

## SINGLE OWNER TRACTOR COLLECTION

- 1965 John Deere 4020 Turbo Diesel Tractor with 3pt, Rear Hydraulics, 540 PTO & Updated Fuel Injection System. Serial # SNT211R107317R



- 1958 John Deere 630 Gas Tractor with Narrow Front, Power Steering, PTO & Hydraulics. Shows 1330 Hrs



- 1954 John Deere 60 with Narrow Front (Very Good Rubber and Lights Working)



- 1955 John Deere 50 with Narrow Front, 12v System, PTO & Power-Trol. Serial #5025091

- 1950 Farmall H with Narrow Front, PTO & 12 Volt System (Very Good Rubber)

- Case 3 Bottom 3pt Plow

- 18.4-38 Band Duals

- Collection of 50+ Farm toys (Still in the Box)

## SPRAYERS

- Rogator 854 Self Propelled Sprayer with 800 Gallon Stainless Tank, 80' Booms, EZ-Steer and AG Leader Electronics, Foam Markers, Like New Firestone Tires. Also Sells with a Set of Big Floater Tires



- 800 Gallon 50' Sprayer on Walking Tandem Axles with Hydraulic Pump



## HAY EQUIPMENT

- New Holland H7230 Discbine with 10' 4" Cut, Rubber Rollers, 540 PTO Drive & Hyd. Width Adjust



- Bush Hog HMG7 7' 3pt Mount Disc Mower, 540 PTO Drive



- Kuhn Speedrake SR110 10 Wheel V-Rake

- Six Wheel In-Line Rake

- John Deere 468 Round Baler with Net Wrap, Mega Wide Plus Pickup, Flotation Tires, Bale Kicker & 540 PTO, Shows 12,462 Bales

- New Holland BR7090 Round Baler with Net Wrap, Xtrasweep Pickup & 1000 PTO



- Gehl 2780 Round Baler with Variable Open Throat, Twine Tie (Always Shredded, Good Condition)



- New Holland 846 Round Baler

- John Deere 24T Square Baler (One Owner, Always Shredded)

- New Holland 273 Square Baler

- New Holland Side Delivery Rake

## TILLAGE & PLANTING EQUIPMENT

- JSalford 5100 12FT High Speed Disk with Rear Harrow and Rolling Baskets, Blades Measure Approx. 22in. (Very Good Condition)

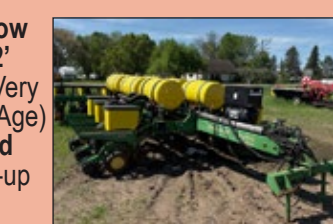


- IH 470 18' Disk

- 10 Shank Chisel Plow

- John Deere TWA 12' Disk with Hyd. Lift (Very Good Shape for the Age)

- John Deere 16' Field Cultivator with Fold-up Wings



- John Deere 7200 Conservation 12 Row Front Fold Corn Planter, Max Emerge2, Accumeter with Liquid Fertilizer

- IH 620 Press Drill

## UTV, LAWN MOWERS & RELATED

- 2016 Honda Pioneer 700 UTV with 9,971 Miles



- Husqvarna MZ54 Zero-Turn Lawn Mower with Kohler Confidant 23hp Gas Engine, 54" Deck & Only 310 Hours

- John Deere X320 Riding Lawn Mower with 54" Deck, Kawasaki Engine, 814 hrs. (New Blades and Ready To Go)

- Toro X5 Wheel Horse with Mower Deck and Front Mount Snowblower (Good Runner with Engine Work Done Last Year, Good Condition)

- John Deere X500 Riding Lawn Mower with 54" Deck and Front Mount Snowblower

- Swisher 60" Pull Type Mower with 13 HP Gas Engine (Good Condition with New Blades and Bearings)

- DR Leaf and Lawn Vacuum, ull Type with 223cc DR Gas Engine

- Aluminum Duck Boat

## COMBINE, HARVEST, & FORAGE CHOPPING EQUIPMENT

- John Deere 9610 Maximizer Combine with PRWD (4 Wheel Drive), Dual Front Tires, Hopper Extension, 3,119 Separator Hrs. & 4892 Engine Hrs. Serial # H09610X678413 (Good Condition with New Unload Auger Last Year)



- John Deere 893 8-Row 30" Corn Head with Poly Snouts & Knife Rolls

- White Harvest Boss 8900 Combine with 3200 hrs

- EZ Trail 3400 Gravity Box on 13-Ton Running Gear

- Bradford 173 Gravity Box on Deco 8-Ton Running Gear

- Circle Steel 24' Grain bin, Holds approx. 6,500 Bu.

- (2) Gehl 980 Chopper Boxes on Tandem Axle Running Gears

- John Deere 2020 20' Stalk Chopper, Small 1000 PTO

- Sunmaster 15' Stalk Chopper

- Van Dale Manure Pump

- 6-Ton Running Gear

## LIVESTOCK EQUIPMENT

- Real Industries Alley Way Splitter (Brand New)

- Arts Way 425-C Grinder Mixer

- Gehl 95 Grinder Mixer with Multiple Screens

- Lorenz 100 Grinder Mixer

- (6+) 24' Fenceline Feedbunks with Adjustable Neckrail

- (30+) 38' Freestanding Panels with Fiberglass Rod

- (10) 24' Full Frame Cattle Panels

- (3) 11' Creep Panels with Adjustable Height

- (5+) Drive Over Gates

- (2) 7'x15' Drive Over Cattle Guards made with 2&3/8" well pipe and 4.5" spacing

- (2) 25' Widbreaks Made with Well Pipe and Super Steel

- (2) Mini Wind breaks Made with Well Pipe and Super Steel

- (2) 4'x20' Sheep and Goat Panels

- (2) 4'x10' Galvanized Gates

- (30+) Used Railroad Ties

## CABIN, TOOLS & MISC.

- 30'x12' Log Cabin Including 6' Walk-out Porch with Railing, Interior Room and Loft. This is Brand new with a steel roof and exterior stain. Transport available



- Lincoln 225 Arc Welder

- Craftsman Band Saw

- (2) Craftsman Radial Arm Saws

- Craftsman Table Saw

- (2) Porter Cable Air Compressors



## SKID LOADER, DOZER, ATTACHMENTS & RELATED

- 2024 New Holland L328 Skid Loader with Only 60 HRS, EH Hand Control ISO or H, Current Warranty till 10/2026, High flow Plus



- package - Large Screen and Back-up Camera Enclosed Cab with Heat and AC - Air Ride and Heated Seat - Large Tires 14-17.5 All LED Lights

- Power Quick Attach - 2 Speed - Has Glide Ride Foot Throttle - EH with Fully-Customizable Bucket Functions and Drive Functions

- Bobcat T650 Tracked Skid Loader with enclosed cab and 2339 hrs



- Caterpillar D4 Dozer Serial #7U4664

- Crown 5.5 Yard Scraper

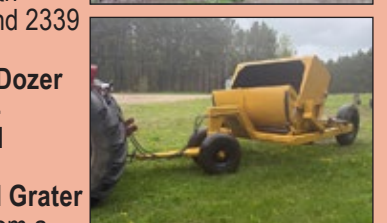
- Pull Type Road Grater (Good Shape from a Local Township)

- 10' Pull Type Road Grader

- Virnig 84" Hay Bucket Grapple with Skid Loader Type Universal Quick-Tatch

- 10" Post Hole Auger Extension

- Farm King 9600 8' 3pt Snowblower with Double Auger, 540 PTO Drive



## SEMI'S, TRAILERS, CAMPERS, VEHICLES & RELATED

- 2012 Kenworth T660 Sleeper Semi Truck with Cummins ISX 15 Engine Tuned to 500hp, 10-Speed Eaton Fuller Transmission. DEF System Deleted, 1.18 Million Miles (Truck was once Overhauled. Hardly any use on New Head, Head Gasket, Manifold Gasket & 2050 Torque Clutch



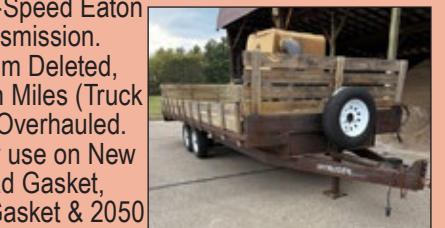
- 2001 Ford E350 15-Passenger Bus with Handicap Ramp & Triton V-10 Gas Engine

- 1999 Ford F-250 Extended Cab Long Box 4x4 Pickup with 7.3 Diesel Engine, 5 Speed Manual Transmission & 257,000 Miles (Runs and Drives)

- 2003 Double A Intruder 20'x8' Deckover Trailer with Wood Sides (New 5,200lb axles, Tires, and Spare)

- (6) 15" Steel Rims

- Many More Expected



**MORE PICTURES AVAILABLE AT**

[WWW.SCHUBERTACTIONS.COM](http://WWW.SCHUBERTACTIONS.COM)

**Can't Make The Sale? Bid Online Through [WWW.SCHUBERTACTIONS.COM](http://WWW.SCHUBERTACTIONS.COM) ♦ Call Luke 218-251-7610 For More Info**

# PIERZ JUNE 20<sup>TH</sup> CONSIGNMENT AUCTION

**AUCTIONEERS:**

**LUKE SCHUBERT ♦ LIC # 18-342 ♦ (218) 251-7610**

**DAVE SCHUBERT ♦ LIC # 18-294 ♦ (218) 829-7015**

**CLERKED BY: SCHUBERT AUCTION SERVICE ♦ NOT RESPONSIBLE FOR ACCIDENTS**



Terms: Cash, Good Check, or Credit Card on the day of the sale. All buyers must register with clerks to obtain a bidding number to participate in this auction. This auction will have no buyer's premium to onsite buyers. Credit card transactions have a 4% convenience fee added to the total. Online buyer's premium will be charged to all online purchases. Out-of-area buyers please have a bank letter of credit available on sale day. Not responsible for accidents. While we do our best to describe all consignments correctly, buyers must inspect items carefully prior to bidding as all items will sell as is.

