



SCHUBERT AUCTIONS

“AUCTION” IS “ACTION” WITH -U- IN IT!

SATURDAY, JUNE 14TH, 2025 ♦ 9AM

LOCATION: 14343 HWY 25 PIERZ, MN 56364 (INTERSECTION OF HWY 25 AND HWY 27) IN THE HEART OF PIERZ MN

♦ Sale Starts at 9:00 A.M. ♦ Lunch By Chuck Wagon Grille ♦

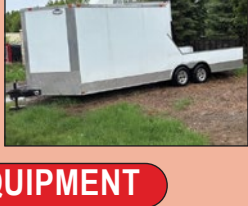
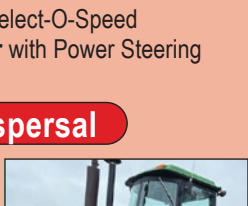
Toilets On Site

Auctioneer's Note: Schubert Auction Service would like to thank everyone for their continued support of the Pierz Farm Consignment Auctions. This looks to be another great auction with outstanding quality. The auction has many great items, all consigned by local farmers in Pierz and the surrounding areas. There is guaranteed to be at least double this many consignments by sale day, so keep up with www.schubertauctions.com for updated lists. **Online items will begin selling at 9:30 AM. If questions, please call Luke Schubert (218) 251-7610.**

More Consignments Welcome - All Items must be to the sale location by Wednesday, June 11th. ♦ View and Inspect Items on June 12th & 13th from 9^{AM} - 6^{PM} for assistance.

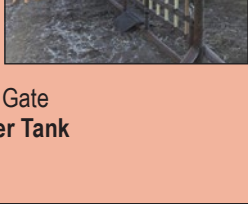
TRACTORS

- **New Holland T7 235 MFWD Tractor** with Auto command CVT Transmission, 4 Remote Hydraulics, Rear Duals, 9700 hrs, 420/85 R28 Rear Tires
- **New Holland 8870 MFWD Tractor** with Rear Duals, 3 pt, 4 Remote Hydraulics, only 5783 hrs & Powershift Transmission
- **1981 John Deere 4440 2WD Tractor** with Quad Range Transmission, Front Suitcase Weights, 3 Remote Hydraulics, 10,819 hrs (Nice Tractor with 654 hrs. on reman engine, Radiator & Oil Cooler. Hydraulic pump also replaced last fall)
- **IH 986 2WD Tractor** with 7240 hrs, Bush Hog 2846 QT Loader with Bucket and Bale Spear (Good Rubber, Just Serviced)
- **Cockshutt 570 Diesel Tractor** with Power Steering (Very Nice Restoration, Parade Ready, Good Rubber, Just Serviced and New Battery)
- **Massey Ferguson 1135 Tractor** with Fresh Overhaul & New Rear Tires (Complete Paperwork on overhaul dated January 2025, New Injector Pump as a few years ago as well)
- **John Deere 350 Dozer** with Diesel Engine
- **Ford 971 Diesel Tractor** with Select-O-Speed
- **John Deere 730 Diesel Tractor** with Power Steering
- **John Deere 620 Gas Tractor**



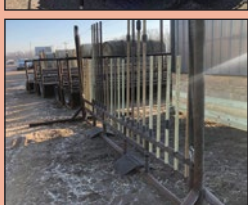
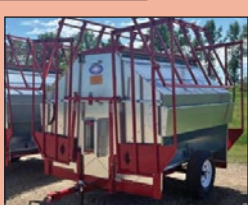
One Owner Dispersal

- **John Deere 4450 MFWD Tractor** with Powershift Transmission, 3 pt, 8005 hrs (Very Good Rubber)
- **1997 Mack Triple Axle Dump Truck**
- **2003 Isuzu Box Truck** with Lift Gate
- **2017 Load King 40' Flatbed Gooseneck Trailer** with Jumbo Ramps, Side Tool Boxes, Chain Box & Strap Winch Rail and Sliding Winches
- **WOW 22' Race Trailer** with Enclosed Front
- **2014 24' Enclosed Trailer** with Rear and Side Door, Diamond Plate Rock Guard



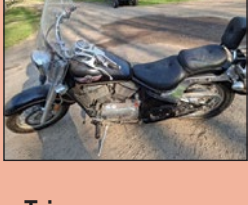
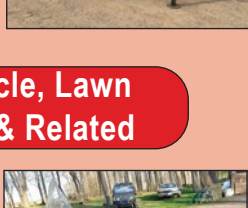
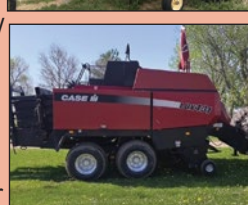
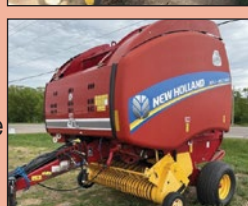
LIVESTOCK EQUIPMENT

- **Brand New Plains Industries Creep Feeder** – Galvanized Body, Stainless-Steel Troughs, Folding Sides
- **Single Horse Trailer on Tandem Axles** (Farm Trailer, No Title)
- **13' Drive-Over Gate**
- **12' Cattle Alleyway**
- **Handy Man Head Gate**
- **(2) ATV Drive-Through Gates**
- **(40) 5'x16' Freestanding Goat & Sheep Panels**
- **(5) Freestanding Goat & Sheep Panels** with 4' Swinging Gate
- **500-Gallon Black Rubber Water Tank**



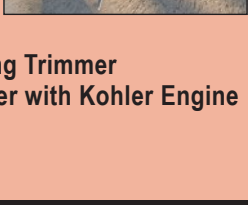
HAY EQUIPMENT

- **2017 New Holland 313 Discbine** with 13' Cut, Center Pivot Hydroswing Tongue, Rubber Rollers, Mow Max II Cutter Bar with Quick Change Knives
- **2016 New Holland H7230 Discbine** with 10' 4" Cut, 540 PTO, Hydraulic Adjusting Tongue & Rubber Rollers
- **New Holland 479 Haybine**
- **New Holland 455 Pull Type Sickle Mower**
- **H&S HMS-P 6' Merger** with 2' Flip Over Extension & Hydraulic Swing Tongue
- **Sittrex 10 Wheel V Rake** on Hydraulic Fold Cart
- **Da-Co 9 Wheel Hay Rake**
- **9 Wheel Hay Rake** with 3rd Wheel on Tongue
- **New Holland 56 Side Delivery Rake**
- **New Holland 5 Bar Side Delivery Rake**
- **John Deere 567 Silage Special Round Baler** with Monitor, Net Wrap, Mega Wide Pickup, 540 PTO, Makes a 5x6 Bale, 12,081 Bales (2nd Owner, Nice Baler)
- **2014 New Holland Roll Belt 460 40th Anniversary Edition Round Baler** with Twine Tie, Monitor & Only 3,862 Bales (Very Good Condition, Through the Shop and Ready to Go)
- **IH 3550 Round Baler**
- **2003 Case IH LBX 431 3x4 Big Square Baler** with approx. 18,000 Bales (Owner states recently went through shop and is ready to go)
- **John Deere 336 Small Square Baler** with #40 Thrower
- **IH 435 Small Square Baler**
- **New Holland 1034 Small Square Stacker Wagon**
- **8'x16' Hay Rack**
- **2022 Econo Wrap EW 1800TA Bale Wrapper** (Like New, Only 156 Bales Wrapped)



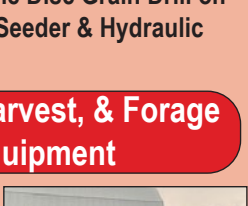
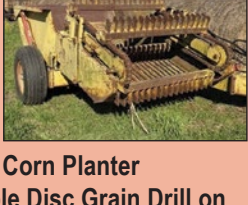
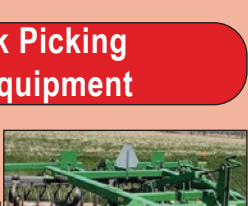
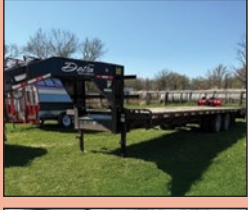
Motorcycle, Lawn Mowers & Related

- **2003 Kawasaki 800 Vulcan Classic Motorcycle**, with 24,000 Miles
- **John Deere E110 Riding Lawn Mower** with 42" Deck, 136 hrs
- **1985 Larson Boat & Trailer** (Boat Ran When Parked)
- **Husqvarna Push-Type String Trimmer**
- **Troy-Bilt 7hp Rear Tine Tiller** with Kohler Engine (Always Stored Inside)



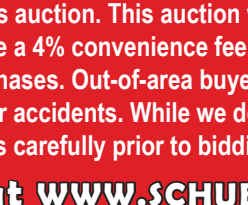
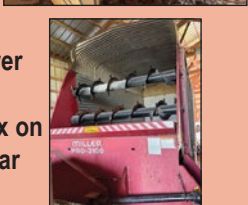
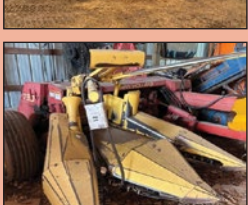
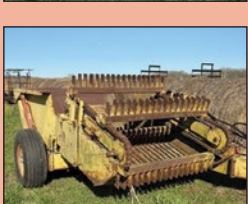
CAMPERS & TRAILERS

- **J2012 Jayco Pinnacle 36' 5th Wheel Camper** with 4 Slide-Outs, 4-Season, Very Spacious. Owner States Used Mainly in Arizona. All Systems Work Except Living Room AC
- **2013 WildCat Sterling 5th Wheel Camper** with 2 slide-outs, shower, sink, toilet, 2 recliners, pull-out couch, master bedroom, fridge, TV, microwave, oven & stovetop.
- **2021 Delta 32' Flatbed Trailer** with Tandem Dual Axles, Flex Control, Super Ramps (One Owner)
- **2016 Continental 16' Enclosed Trailer**, Rear and Side Doors, Black, Diamond Plate Rock Guard
- **United 6'x12' Enclosed Trailer**, 3 Doors, Electric Brakes
- **H&H 6x10 Enclosed Trailer**, Electric Brakes, 3 Doors
- **Heavy-Duty Lo Pro Tilt Bed Trailer** for Small Skid Loader or Side-by-Side
- **10' 2-Place Snowmobile Trailer**
- **Propane Tank Trailer**



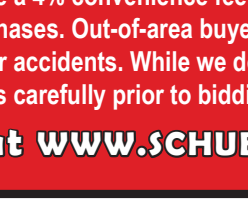
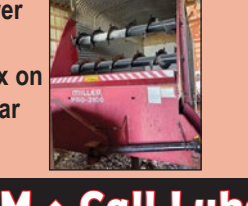
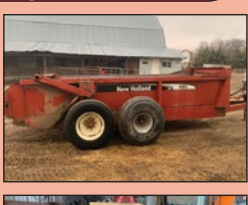
Tillage, Rock Picking & Planting Equipment

- **John Deere 637 15' Rock Cushion Disk**
- **John Deere 11 Shank Chisel Plow**
- **IH 9600 9 Shank Chisel Plow**
- **18' Manual Fold Disk** with Manual Folding Wings
- **IH 5 Bottom Auto Reset Plow** with Pull Type Hitch
- **Case IH Model 14, 7 Shank V Ripper**
- **Schulte Rock Picker**
- **John Deere 1250 4 Row 36" Corn Planter**
- **John Deere Van Brunt Double Disc Grain Drill** on Rubber Wheels with Grass Seeder & Hydraulic Lift



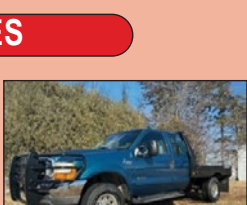
Manure Spreader, Harvest, & Forage Chopping Equipment

- **New Holland 195 Manure Spreader** with Poly Floor
- **John Deere 920F 20' Bean Head**
- **John Deere 216 16' Bean Head** on Homemade Type Trailer
- **New Holland 790 Forage Chopper** with Electric Controls, Newer Paddles on Blower & 2 Row Corn Head (Set to 36", can switch to 30")
- **New Holland 27 Silage Blower** with Gooseneck
- **Miller Pro 3100 Chopper Box** on 12 Ton Tandem Running Gear



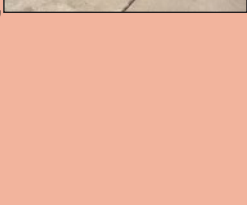
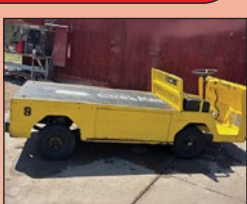
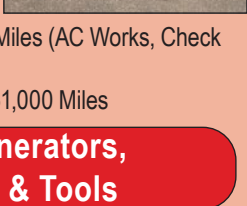
SEMI-TRUCKS

- **1997 GMC C7500 Grain Truck** with 3116 Cat Engine, 6-Speed Manual, Big Swing Door, Hydraulic PTO Pump, Air Tailgate, 197,900 Miles
- **1993 Freightliner Daycab** with 330hp Cummins N14, Air Ride, 10-Speed, 700,000 Miles (New Drive Tires, \$4,000 in Recent Motor Work)
- **1992 GMC Topkick Lo-pro** with 427 Gas Engine, 6-Speed, 10' Flatbed, Good Rubber
- **1990 Chevy G30 Cab & Chassis Truck** with 454 TBI Engine, 93,000 Miles (Farm Truck or for Parts, No Title)



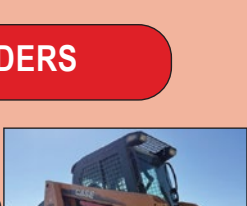
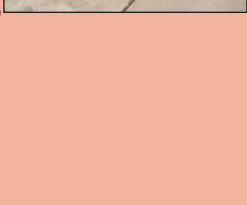
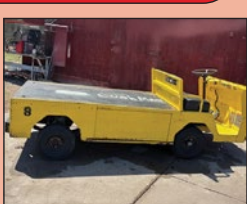
VEHICLES

- **2001 Ford F-350 4x4 Power Stroke Extended Cab Diesel Pickup** with 7.3L Diesel Engine, 6-Speed Manual, Bradford Built Flatbed, Ranch Hand Grill Guard, Bully Dog Chip
- **2010 GMC 2500HD 4x4 Crew Cab Pickup** with 6.0 Gas Engine, 173,000 Miles, Sony Flatscreen Radio, Subwoofer, Brand New Tires
- **2009 Chevy 1500 Crew Cab 4x4 Z71**, with 160,000 Miles (Good Rubber, Owner States Everything Works)
- **2004 Chevy 2500HD Crew Cab** with 6.0 Gas Engine, 197,000 Miles, Fifth Wheel Hitch
- **2004 Chevy Silverado 1500 LS Crew Cab**, 4x4, 5.3 Liter Gas Engine, Aluminum Rims, 273,250 Miles (AC Works, Check Engine & ABS Lights On)
- **2005 Pontiac Bonneville** with 261,000 Miles



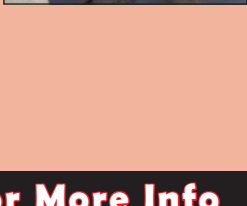
Cushman, Generators, Snow Blower & Tools

- **Cushman Textron Titan Electric Golf Cart Type Truck** with Flat Bed
- **Katolight PTO Driven Generator**, 25KW, 120/240, Single Phase (Only 3 hrs, Like New)
- **Honda Gas EG3500 Generator**, 120/240
- **John Deere 826D Walk Behind Snowblower**
- **Do-All Metal Cutting Band Saw**
- **45' Roller Conveyor**



SKID LOADERS

- **2011 Case 420 Series 3 Skid Loader** with Quick Attach, Enclosed Cab, Radio & Heat. 6,380 hrs & Good Tires
- **Bobcat 873 Skid Steer** (Needs New Engine)
- **Trailer Mover Skid Loader Attachments** (Brand New)



Can't Make The Sale? Bid Online Through WWW.SCHUBERTACTIONS.COM ♦ Call Luke 218-251-7610 For More Info

PIERZ EARLY SUMMER CONSIGNMENT AUCTION

AUCTIONEERS:

LUKE SCHUBERT ♦ LIC # 18-342 ♦ (218) 251-7610

DAVE SCHUBERT ♦ LIC # 18-294 ♦ (218) 829-7015

AL WESSEL ♦ (320) 760-2979

CLERKED BY: SCHUBERT AUCTION SERVICE

NOT RESPONSIBLE FOR ACCIDENTS



Terms: Cash, Good Check, or Credit Card on the day of the sale. All buyers must register with clerks to obtain a bidding number to participate in this auction. This auction will have no buyer's premium to onsite buyers. Credit card transactions have a 4% convenience fee added to the total. Online buyer's premium will be charged to all online purchases. Out-of-area buyers please have a bank letter of credit available on sale day. Not responsible for accidents. While we do our best to describe all consignments correctly, buyers must inspect items carefully prior to bidding as all items will sell as is.

More Pictures Available at WWW.SCHUBERTACTIONS.COM

SCAN FOR MORE

